



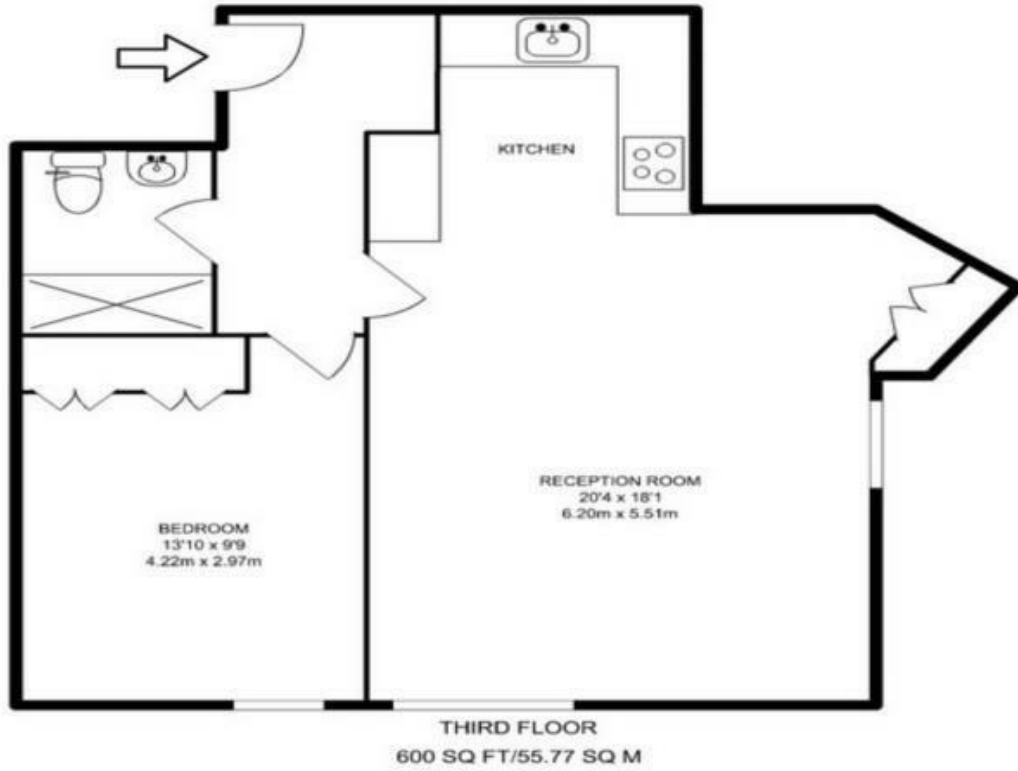
Decima Street, London, SE1 4QQ

A unique and recently renovated apartment, located in London Bridge, with the famous skyscraper "The Shard" within walking distance. The flat is on the third floor of a contemporary development and offers a stylish and bright living room, a fully fitted open plan kitchen, a spacious double bedroom and a modern bathroom with walking shower. In Bermondsey Street you will find an array of shops, bars and restaurant, close also to the White Cube Gallery and the Borough Market.

- One Bedroom Apartment
- Double Glazed Windows
- Close to Amenities
- Close to Transport
- Spacious Double Bedroom

Alex & Matteo
ESTATE AGENTS

£2,000 Per month



Energy Efficiency Rating		Current	Potential
<i>Very energy efficient - lower running costs</i>			
(92 plus) A			
(81-91) B		82	82
(69-80) C			
(55-68) D			
(39-54) E			
(21-38) F			
(1-20) G			
<i>Not energy efficient - higher running costs</i>			
England & Wales		EU Directive 2002/91/EC 